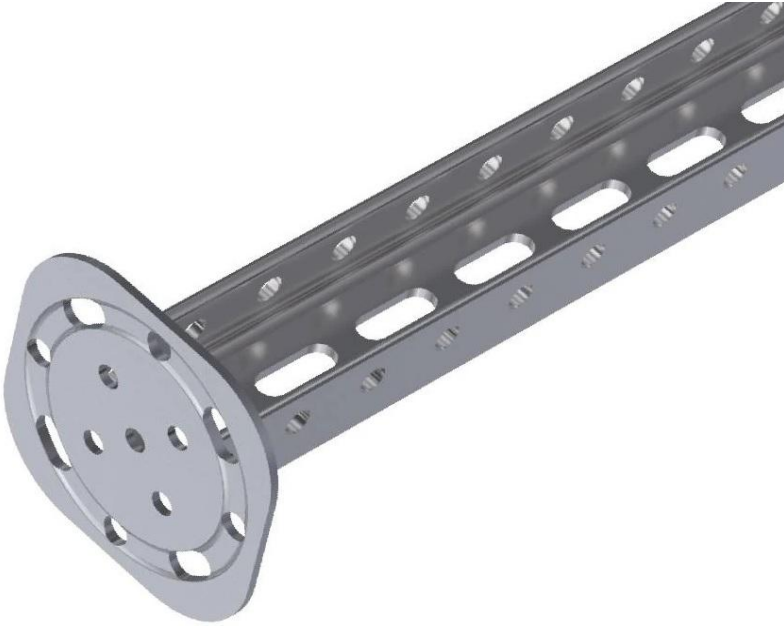
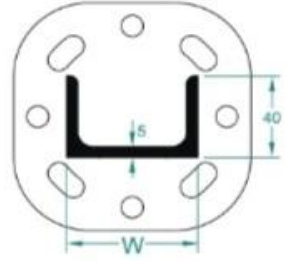




# NPU Profil Tavan Montaj Elemanı STS-NPUT65



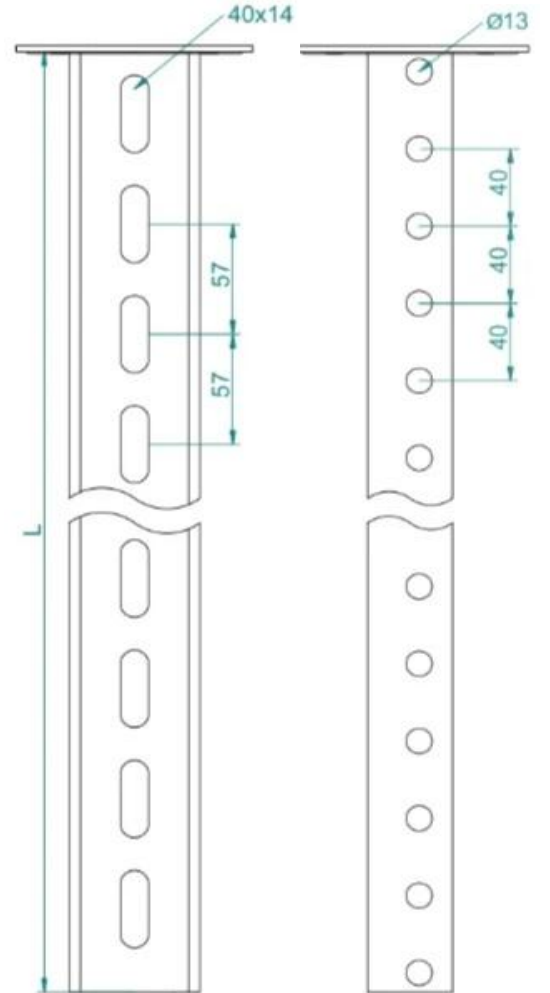
• Ölçüler mm. dir. - Dimensions in mm



 Sıcak Daldırma Galvaniz - Hot Dip Galvanized

 Pregalvaniz - Pregalvanized

Ürün Kodu Product Code	W mm	L mm	Kg ad/pce.	Kg ad/pce.
STS NPU65-20	65	200	-	1,397
STS NPU65-30	65	300	-	2,095
STS NPU65-40	65	400	-	2,794
STS NPU65-50	65	500	-	3,492
STS NPU65-60	65	600	-	4,191
STS NPU65-70	65	700	-	4,889
STS NPU65-80	65	800	-	5,588
STS NPU65-90	65	900	-	6,286
STS NPU65-100	65	1000	-	6,985
STS NPU65-110	65	1100	-	7,683
STS NPU65-120	65	1200	-	8,382
STS NPU65-130	65	1300	-	9,080
STS NPU65-140	65	1400	-	9,779
STS NPU65-150	65	1500	-	10,477
STS NPU65-160	65	1600	-	11,176
STS NPU65-170	65	1700	-	11,875
STS NPU65-180	65	1800	-	12,573
STS NPU65-190	65	1900	-	13,271
STS NPU65-200	65	2000	-	13,970
STS NPU65-300	65	3000	-	20,955



## Yüzey Koruma

Sıcak Daldırma Galvaniz TS 914  
Elektro Galvaniz TS 149

## Surface Protection

Hot Dip Galvanized. ISO EN 1461  
Electro Galvanized DIN 50976